

## **CALIBRATION**

**\*\*\*\*\*READ COMPLETELY THROUGH THESE INSTRUCTIONS BEFORE YOU BEGIN!\*\*\*\*\***

### Notes on CXDI Adjustment

#### Before Calibration:

1. The temperature in the room when performing calibration must be the same as during an ordinary exposure. Otherwise, you will not be able to obtain a uniform image.
2. Wait for the sensor unit to stabilize before calibrating the instrument (approximately 30 minutes after turning ON the power).
3. Calibrate without the grid.

#### During Calibration:

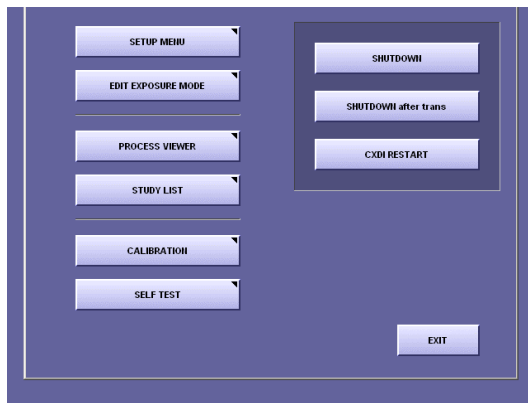
1. Align the system as for an ordinary exposure (40"SID), such as when the whole imaging area of the sensor unit will be exposed (Both collimators are fully open and cross hairs are centered over plate, Generator must be level (use level-o-gauge on collimator to verify))
2. Do not put any lead mark on the sensor unit, or place any object between the sensor unit and the X-ray tube. Such an object will appear on all pictures.
3. If the message "Calibration Error." "Too Much/Little Dose. Or collimation is used" is displayed, perform calibration again after adjusting the X-ray exposure condition.

#### During Self Test

1. Perform the exposure using the same settings as calibration for the exposure parameter settings and grid usage.
2. In some cases, an error may be detected in TEST 1 due to unintended exposure of the ion chamber or photo timer inside the sensor unit. This is not a malfunction, and you may continue usage as before.
3. Align the system as for an ordinary exposure, such as when the whole imaging area of the sensor unit will be exposed. If a partial exposure occurs, an error may be detected.
4. Do not put any lead mark on the sensor unit, or place any object between the sensor unit and the X-ray tube. If an object obstructs exposure, an error may be detected.

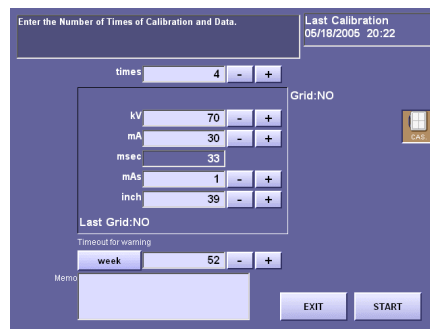
## PERFORMING CALIBRATION

Setting the Parameters (Please refer to SR-130D rev 3.0 operational manual- pg 32-34)  
From the default exposure screen, touch SYSTEM, then CALIBRATION.

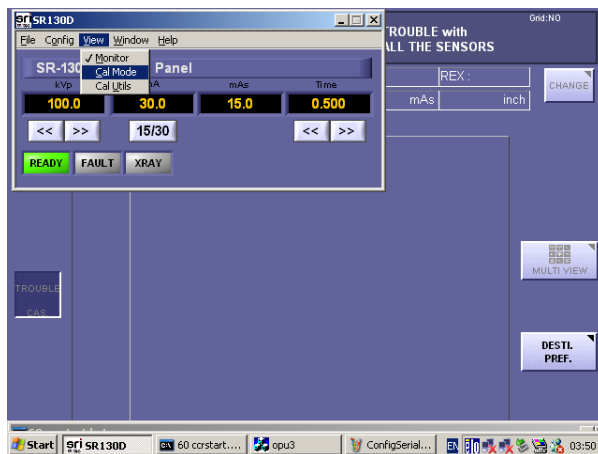


1. It should show the settings below or something very close to them. If not, please change the settings to match what you see below.

times	4
kv	70
ma	30
mAs	1.2 or 1.5
cm	102 or 40 in



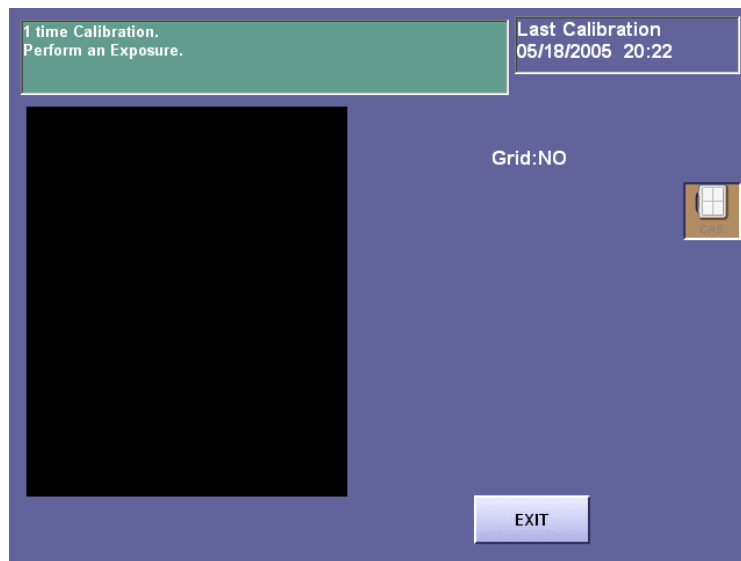
2. Open your keyboard and hold down the ALT button and depress the TAB key. This will open the SR-130-D Control Panel. In that window, select VIEW then CAL\_MODE to enable the Calibration mode in the generator.



3. In the SR-130D Control Panel window, using the touch screen, change the settings in each category to match the settings on the CXDI (main) screen as shown above. (**note-** you must use the up and down buttons. Values will not change if attempting to double-click the actual numbers)
4. Switch BACK to the CXDI window, but do NOT close the SR-130-D Control Panel. Do this by just touching the main window or using the ALT-TAB buttons again.

## **PERFORMING CALIBRATION**

1. Start the calibration by selecting START and following the instructions given in the top left corner of the screen.



2. Press the exposure button as required.  
Be sure to perform calibration exposures only for the number of set exposures.

When data processing results in an error--

A window is opened, and an error message is displayed. After checking the error details, touch OK to close the window. Touch EXIT to cancel calibration, or RETAKE to perform calibration again.

3. After exposures are completed, the message "Please wait," is displayed, and data processing is started.
4. After the calibration concludes, result will appear.  
When calibration is successfully completed, the message "Calibration has succeeded" is displayed. Touch CHECK to return to the initial screen.

When Calibration has failed, a window is opened and an error message is displayed. After checking the error details, touch OK to close the window. Touch EXIT to cancel calibration, or RETAKE to perform calibration again. If problem persists, please contact SRI Service Dept. (631-244-8200) for assistance.